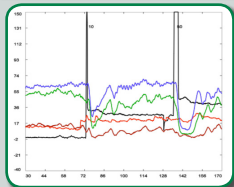


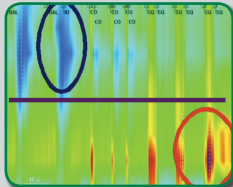
2nd International Anorectal Manometry & Endosonography Course

Evelina London Children's Hospital

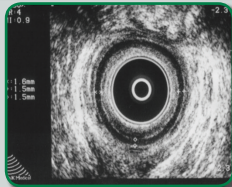
Hands-on Training Course - 21st & 22nd May 2014



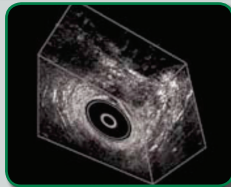
Anorectal Manometry
Conventional



Anorectal Manometry
High Resolution



2D Endosonography



3D Endosonography

Course is ideal for established Paediatric Surgeons, Paediatricians, Trainees and Nurses starting or undertaking anorectal manometry and endosonography in children.

The course will enable you to gain direct experience in anorectal manometry & endosonography scanning and in the interpretation of the results.

There are limited places.

Venue: Sky-2 Conference Room
6th Floor, Evelina Children Hospital
St. Thomas' Campus
Westminster Bridge Road, London SE1 7EH

Cost: Registrars/Trainees £80, Nurses £50
Consultants £180, BAPS members £150

Programme

- Anorectal and pelvic floor Function Anatomy
- Anorectal Manometry, High Resolution
- 3D Endosonography Scanning
- Botulinum Toxin Treatment
- Live Workshops
- Several Work Stations for:
 - Functional Constipation & Soiling
 - Anorectal Malformation
 - Hirschsprung Disease

Course organiser:

Mr Alireza Keshtgar,
Consultant Paediatric Surgeon
Mrs Dorothy Kufeji,
Consultant Paediatric Surgeon

For more information please contact:

Ms Annie Gurnett

E-mail: agurnett@nhs.net

Tel: 020 3192 6761

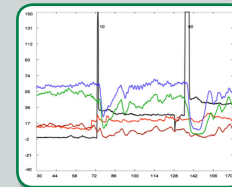
Fax: 020 8333 3040

CPD 6 credits approved by: Royal College
of Paediatrics and Child Health

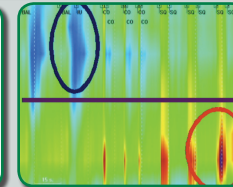
2nd International Anorectal Manometry & Endosonography Course

Evelina London Children's Hospital

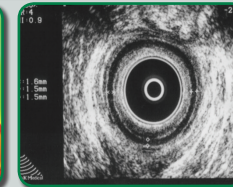
Hands-on Training Course - 21st & 22nd May 2014



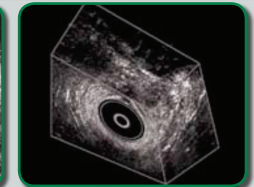
Anorectal Manometry
Conventional



Anorectal Manometry
High Resolution



2D Endosonography



3D Endosonography

Course is ideal for established Paediatric Surgeons, Paediatricians, Trainees and Nurses starting or undertaking anorectal manometry and endosonography in children.

The course will enable you to gain direct experience in anorectal manometry & endosonography scanning and in the interpretation of the results.

There are limited places.

Venue: Sky-2 Conference Room
6th Floor, Evelina Children Hospital
St. Thomas' Campus
Westminster Bridge Road, London SE1 7EH

Cost: Registrars/Trainees £80, Nurses £50
Consultants £180, BAPS members £150

Programme

- Anorectal and pelvic floor Function Anatomy
- Anorectal Manometry, High Resolution
- 3D Endosonography Scanning
- Botulinum Toxin Treatment
- Live Workshops
- Several Work Stations for:
 - Functional Constipation & Soiling
 - Anorectal Malformation
 - Hirschsprung Disease

Course organiser:

Mr Alireza Keshtgar,
Consultant Paediatric Surgeon
Mrs Dorothy Kufeji,
Consultant Paediatric Surgeon

For more information please contact:

Ms Annie Gurnett

E-mail: agurnett@nhs.net

Tel: 020 3192 6761

Fax: 020 8333 3040

CPD 6 credits approved by: Royal College
of Paediatrics and Child Health

Traveling to Evelina & St Thomas' Hospitals, London

St Thomas' Hospital, Westminster Bridge Road, London SE1 7EH, Tel: **020 7188 7188**

Tube:

The nearest tube stations are:
Westminster - District, Circle and Jubilee lines (10 minutes walk)
Waterloo - Bakerloo, Jubilee and Northern lines (15 minutes walk)
Lambeth North - Bakerloo line (15 minutes walk)

Bus:

The following bus routes serve St Thomas':

12, 53, 148, 159, 211, 453, C10 - stop at Westminster Bridge Road
77, 507, N44 - stop at Lambeth Palace Road
3, 344, C10, N3 - stop at Lambeth Road (15 minutes walk)
76, 341, 381, RV1 - stop at York Road
N44, N155, N159, N381 - Night buses stop at Westminster Bridge Road
N3 Night bus stops at Lambeth Road

See the bus routes map (PDF 203Kb) or for information about buses and tubes, please call Transport for London on **020 7222 1234** (24 hours) or visit the Transport for London journey planner website.

Bicycle:

Bicycle racks are located at the front of the main reception along side Gassiot House and next to the Florence Nightingale Museum, both areas are covered by CCTV. See useful cycling information on the Transport for London website.

Train:

Waterloo, Waterloo East, Victoria and Charing Cross are the nearest railway stations, and a 15 minute walk away. For further information, please call National Rail Enquiries on **08457 484950** or visit National Rail website.

Car:

Parking for patients and visitors is very limited, and there is often a queue. The car park is 'pay on foot' so please have the correct change. Pay and get your exit ticket before returning to your car. Parking charges are £2.30 per hour or any part of an hour. Apply 24 hours a day. Free for disabled patients with an appointment that day - get a form from the main reception for your clinicians to sign. 16 free disabled parking bays outside the main car park for visitors and relatives.

Traveling to Evelina & St Thomas' Hospitals, London

St Thomas' Hospital, Westminster Bridge Road, London SE1 7EH, Tel: **020 7188 7188**

Tube:

The nearest tube stations are:
Westminster - District, Circle and Jubilee lines (10 minutes walk)
Waterloo - Bakerloo, Jubilee and Northern lines (15 minutes walk)
Lambeth North - Bakerloo line (15 minutes walk)

Bus:

The following bus routes serve St Thomas':

12, 53, 148, 159, 211, 453, C10 - stop at Westminster Bridge Road
77, 507, N44 - stop at Lambeth Palace Road
3, 344, C10, N3 - stop at Lambeth Road (15 minutes walk)
76, 341, 381, RV1 - stop at York Road
N44, N155, N159, N381 - Night buses stop at Westminster Bridge Road
N3 Night bus stops at Lambeth Road

See the bus routes map (PDF 203Kb) or for information about buses and tubes, please call Transport for London on **020 7222 1234** (24 hours) or visit the Transport for London journey planner website.

Bicycle:

Bicycle racks are located at the front of the main reception along side Gassiot House and next to the Florence Nightingale Museum, both areas are covered by CCTV. See useful cycling information on the Transport for London website.

Train:

Waterloo, Waterloo East, Victoria and Charing Cross are the nearest railway stations, and a 15 minute walk away. For further information, please call National Rail Enquiries on **08457 484950** or visit National Rail website.

Car:

Parking for patients and visitors is very limited, and there is often a queue. The car park is 'pay on foot' so please have the correct change. Pay and get your exit ticket before returning to your car. Parking charges are £2.30 per hour or any part of an hour. Apply 24 hours a day. Free for disabled patients with an appointment that day - get a form from the main reception for your clinicians to sign. 16 free disabled parking bays outside the main car park for visitors and relatives.

Evelina Children's Hospital & St Thomas' Hospital, London

Westminster Bridge Road, London SE1 7EH

Guy's and St Thomas' NHS Foundation Trust

Tel: 020 7188 7188



2012 © Healthcare Design Consultants

Evelina Children's Hospital & St Thomas' Hospital, London

Westminster Bridge Road, London SE1 7EH

Guy's and St Thomas' NHS Foundation Trust

Tel: 020 7188 7188



2012 © Healthcare Design Consultants